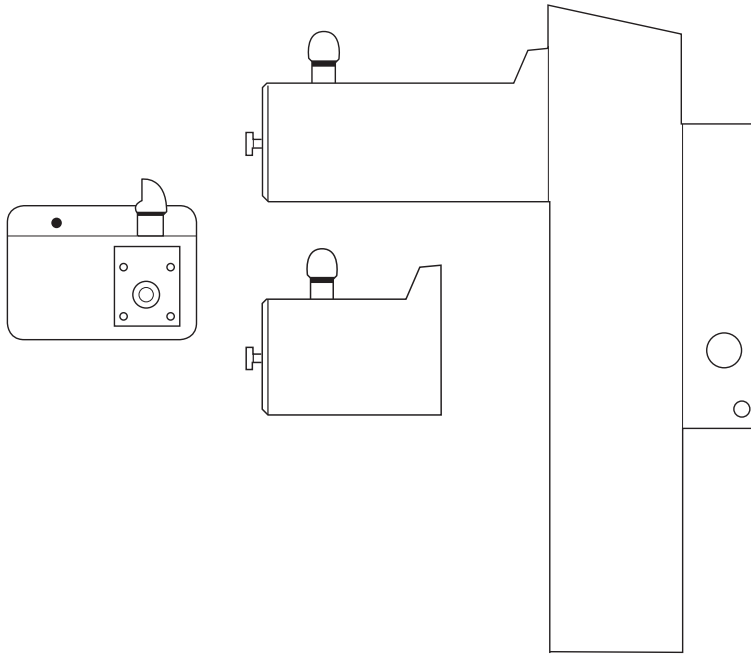




BOHLMANN™
QUALITY PRODUCTS



DFWM-12-FR **DFWM-19-FR**

Freeze Resistant
Wall Mount Stone Fountain

Owner's Manual

STOP!

PLEASE READ THE FOLLOWING INFORMATION.

INSTALLER

DFWM-12-FR & DFWM-19-FR Fountains are among the easiest to install Fountains on the market today. To assure you install these models easily and correctly, **PLEASE READ THESE SIMPLE INSTRUCTIONS BEFORE STARTING THE INSTALLATION. CHECK YOUR INSTALLATION FOR COMPLIANCE WITH PLUMBING, ELECTRICAL, AND OTHER APPLICABLE CODES.**

After installation, leave these instructions with the Fountain for future reference.

This Freeze Resistant Fountain is shipped in two separate cartons. The second carton contains the Freeze Resistant Package that is installed on an interior heated wall. Refer to the Freeze Resistant Package for the rough-in dimensions for installation.

IMPORTANT

ALL SERVICE TO BE PERFORMED BY AN AUTHORIZED SERVICE PERSON

IMPORTANT

THE GROUNDING OF ELECTRICAL EQUIPMENT SUCH AS TELEPHONE, COMPUTERS, ETC. TO WATER LINES IS A COMMON PROCEDURE. THIS GROUNDING MAY BE IN THE BUILDING OR MAY OCCUR AWAY FROM THE BUILDING. THIS GROUNDING CAN CAUSE ELECTRICAL FEEDBACK INTO A FOUNTAIN, CREATING AN ELECTROLYSIS WHICH CAUSES A METALLIC TASTE OR AN INCREASE IN THE METAL CONTENT OF THE WATER. THIS CONDITION IS AVOIDABLE BY USING THE PROPER MATERIALS AS INDICATED. ANY DRAIN FITTINGS PROVIDED BY THE INSTALLER SHOULD BE MADE OF PLASTIC TO ELECTRICALLY ISOLATE THE FOUNTAIN FROM THE BUILDING PLUMBING SYSTEM.

2302 Yellow Smoke Road
PO Box 369
Denison, IA 51442
800.325.2380
www.bohlmann.com

IMPORTANT! INSTALLER PLEASE NOTE

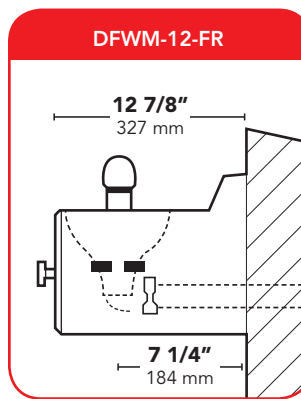
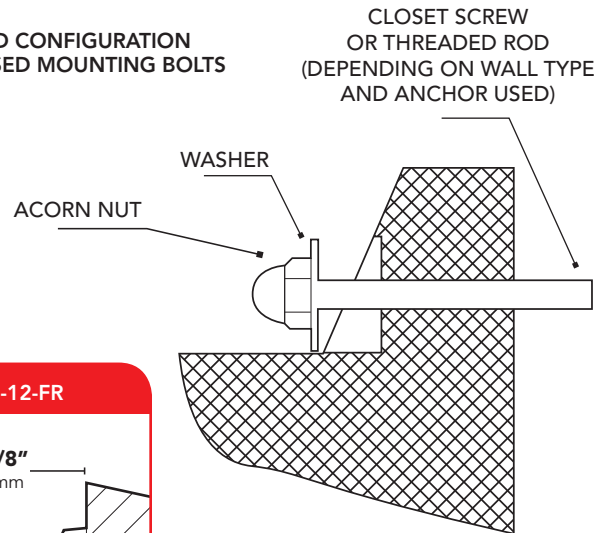
Wall mounting structure must be capable of supporting 300 lb. load on fountain.

GENERAL INSTALL TIPS

- 1 This fountain is to be mounted on a smooth, flat, finished wall surface with adequate support structure.
- 2 Wall should already be framed for the fountain using dimensions shown in rough-in's below. Shown dimensions pertain to installation location.
- 3 Remove bottom cover from fountain and save the screws. Assemble the push rod to the fountain. (Push rod provided with freeze resistant box)
- 4 Install the fountain using bolts and washers (not provided). Tighten securely.
- 5 Attach drain tube to fountain and cut to required length using the freeze resistant box as a guide.
- 6 Install freeze resistant box - see box instructions.
- 7 Install a service stop (not provided) and make water supply connection from the stop to the strainer in the freeze resistant box.
- 8 Connect fountain water line to freeze resistant box - see box instructions. Replace the bottom cover.

DO NOT SOLDER TUBES INSERTED INTO THE STRAINER AS DAMAGE TO THE O-RINGS MAY RESULT.

FIGURE 1
SUGGESTED CONFIGURATION FOR EXPOSED MOUNTING BOLTS



NOTE
DFWM-12-FR height is the same as DFWM-19-FR

FIGURE 2

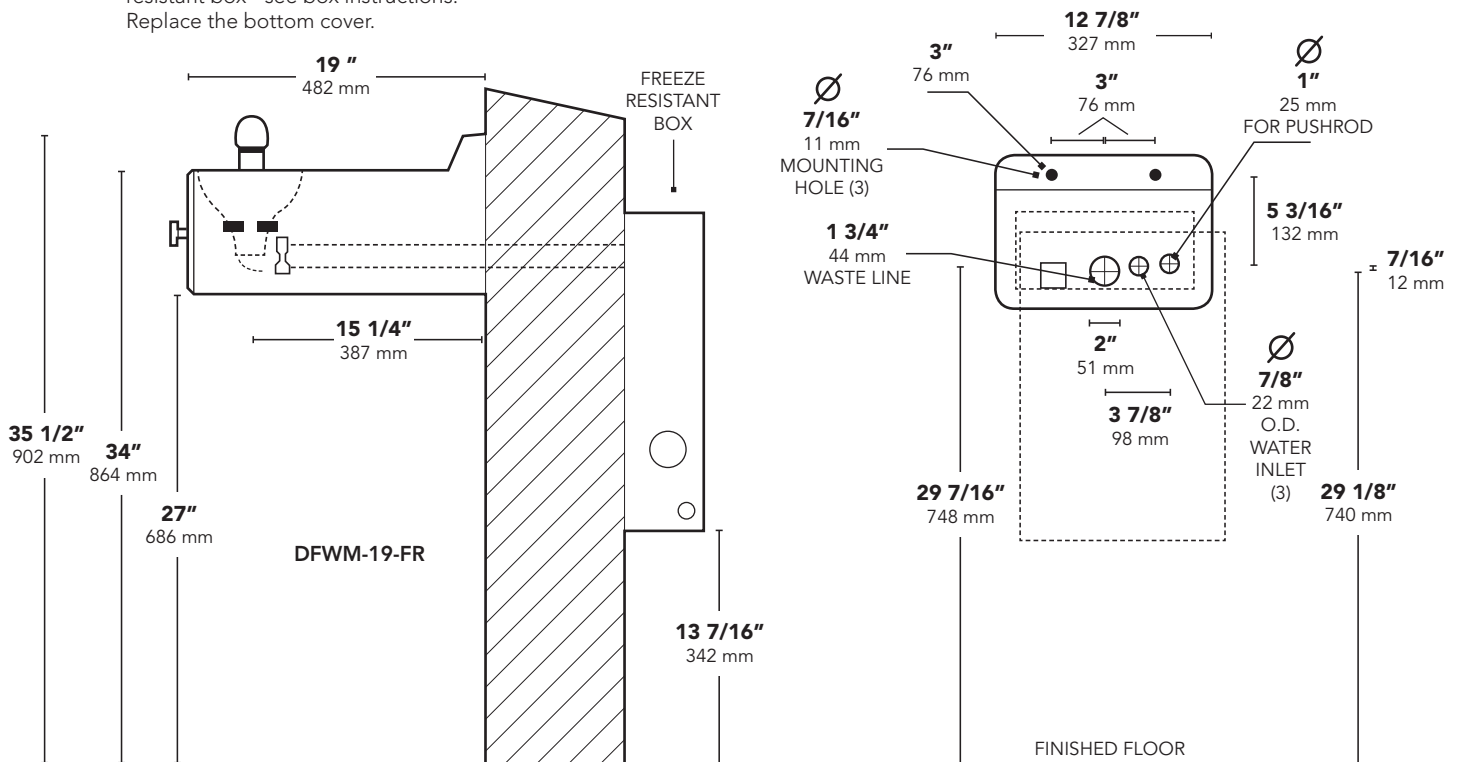


FIGURE 3

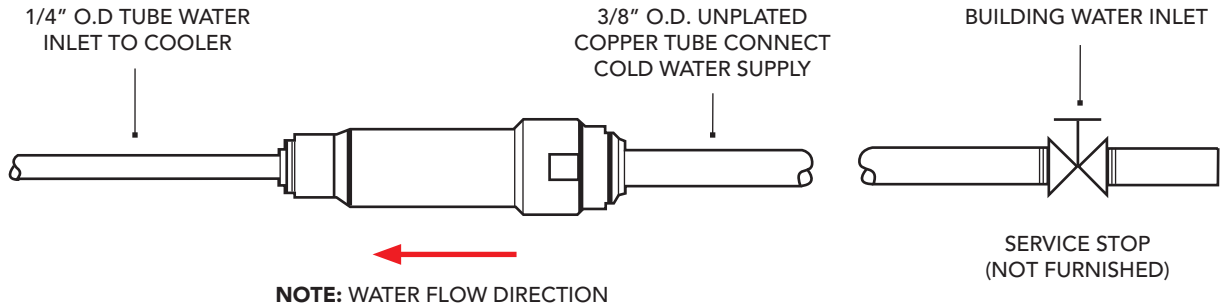
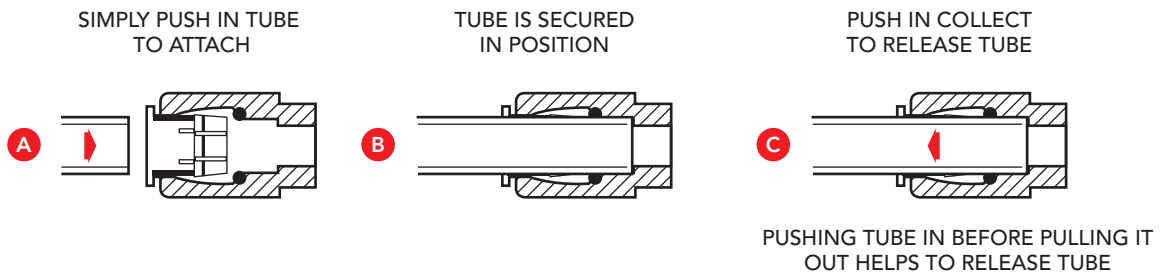


FIGURE 4



TROUBLE SHOOTING & MAINTENANCE

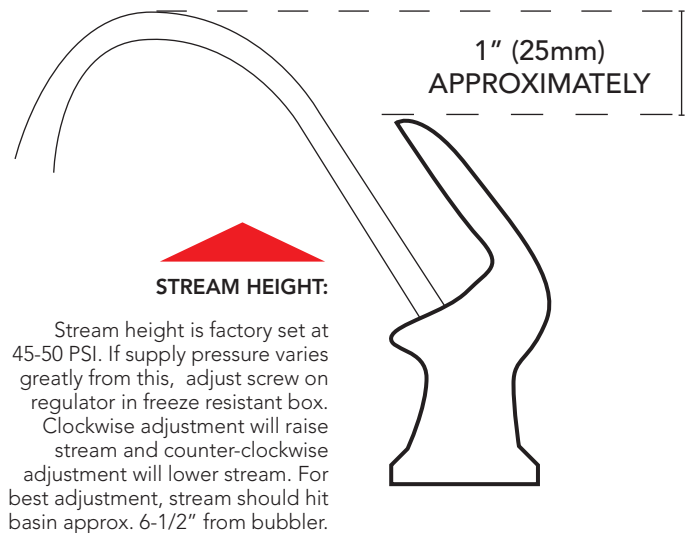
Orifice Assy: Mineral deposits on orifice can cause water flow to spurt or not regulate. Mineral deposits may be removed from the orifice with a small round file or small diameter wire.

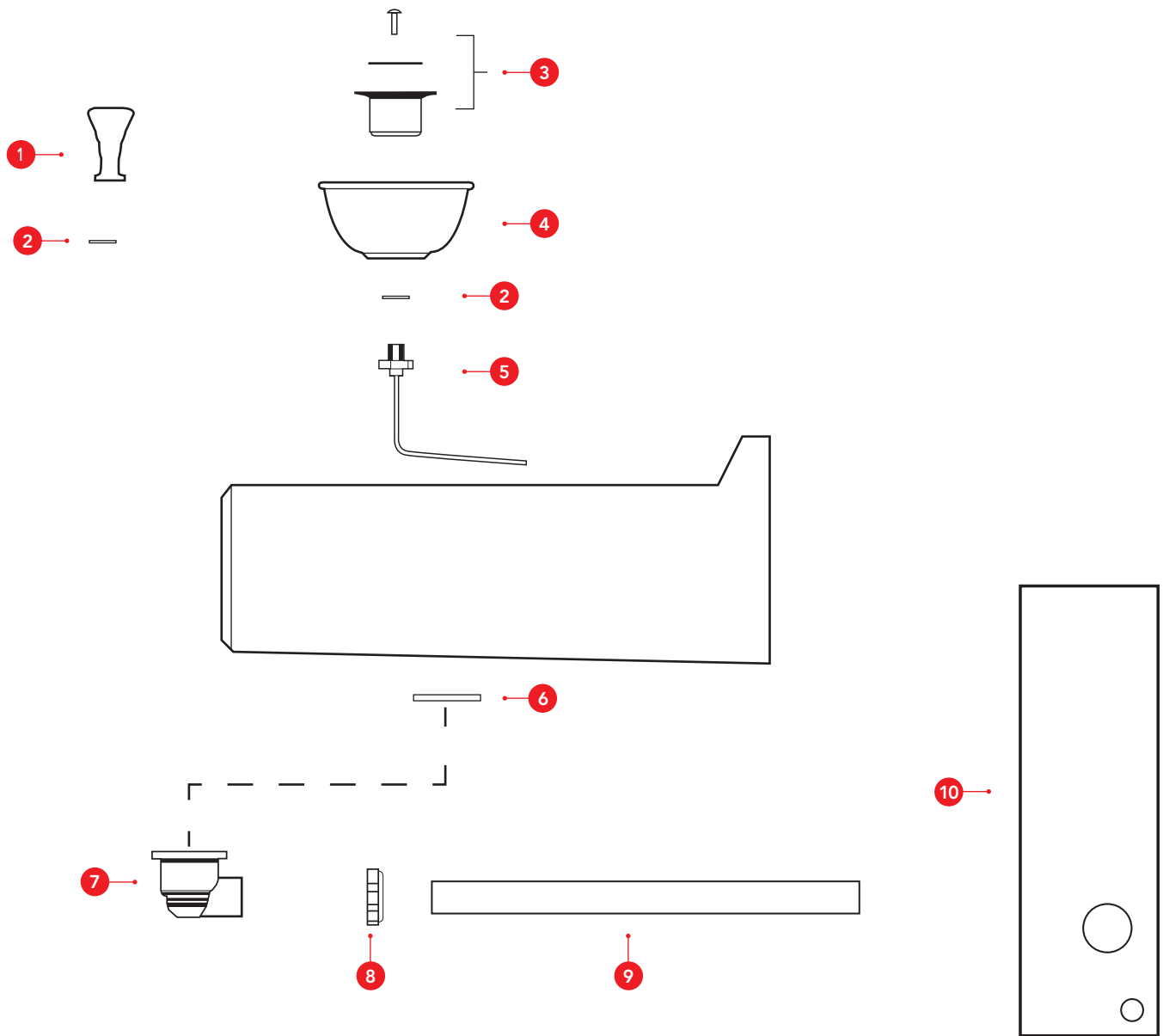
CAUTION: DO NOT file or cut orifice material.

Stream Regulator: If orifice is clean, regulate flow as in "STREAM HEIGHT ADJUSTMENT" instructions below. If replacement is necessary, see parts list for correct regulator part number.

Actuation of Quick Connect Water Fittings: Cooler is provided with lead-free connectors which utilize an o-ring water seal. To remove tubing from the fitting, relieve water pressure, push in on the gray collar while pulling on the tubing (see figure 4).

FIGURE 5





PARTS LIST

ITEM	PART	DESCRIPTION
1	400942308640	Bubbler (Dual Stream)
2	100322740560	Bubbler Gasket
3	600985551640	Drain Plug Assy.
4	170705042830	Basin Receptor
5	15013C	Bubbler Tube Assy.
6	100147140560	Drain Gasket
7	55884C	Drain Elbow
8	55885C	Slip Joint Nut 1-1/4"
9	66346C	Drain Tube
10	97056C	Freeze Resistant Box